

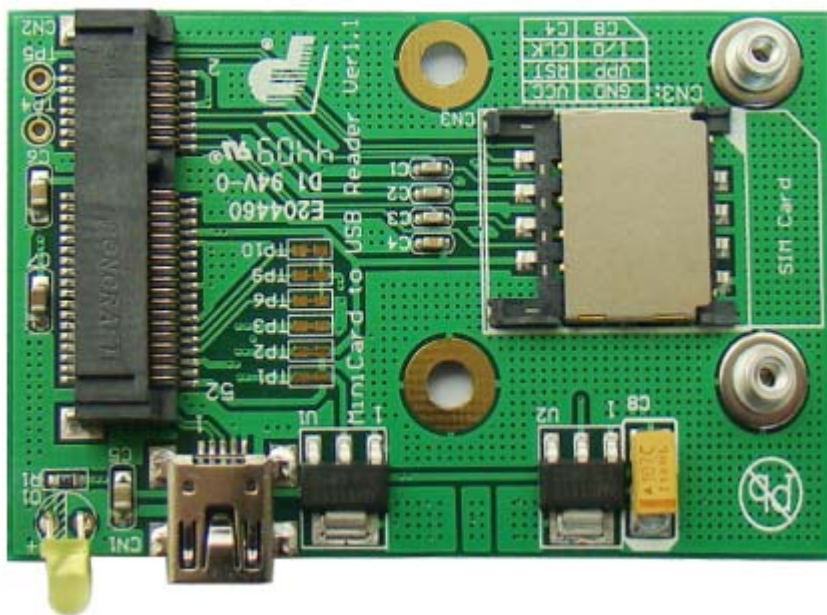


Mini Card to USB Adapter User's Manual

Model: USBMA

FAE2009USBMA_01

Nov 2009



Bplus Technology Co., Ltd.
5F, No.63, Zhou-Tzyy St., Nei-Hu,
Taipei, Taiwan
(886-2)77210550 TEL
(866-2)87974200 FAX
<http://www.Bplus.com.tw>

CONTENTS

Introduction 2

Interface..... 2

Features 4

System requirement 4

Installation procedure..... 4

Caution 7

1.0 Introduction

The USBMA adapter is designed for desktop PCs that convert Mini-Card to USB port.

You can insert your USB type mini card such as HSDPA (3.5G), GPS, 802.11a/b/g to this adapter then plug to USB port through USB cable. Standard SIM card connector is provided

2.0 Interface

Mini Card to USB adapter as shown,

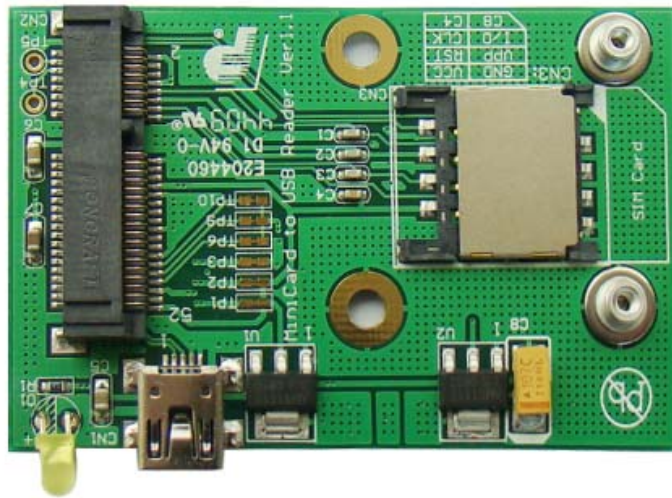


Figure-1 Mini Card to USB Adapter (heads)

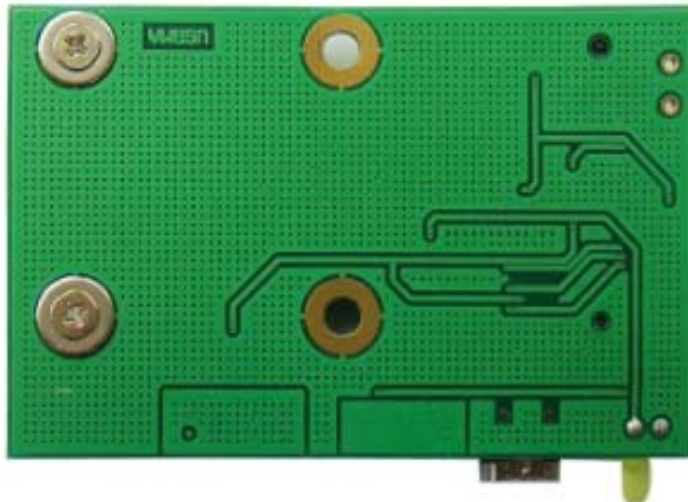


Figure-2 Mini Card to USB Adapter(back)

LED State:

When the user plugs mini card into Mini Card to USB Adapter, LED D1 (Y) is

on. It shows the mini card has been identified by system. When D1 flash, it shows the device connectivity ok and it works normally.

3.0 Features

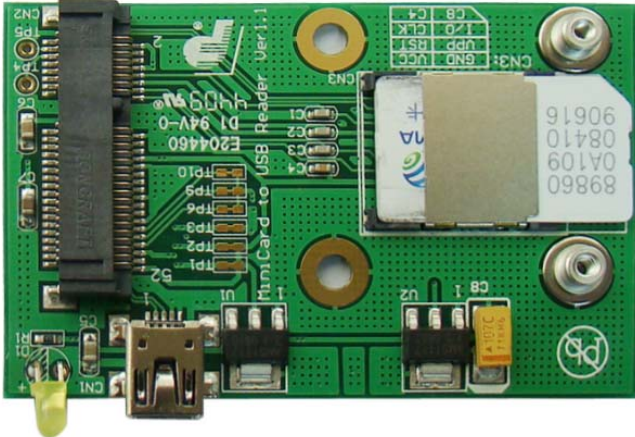
- ◆ USB mini type-B connection to desktop or notebook PC.
- ◆ Supports USB interface.
- ◆ Supports USB interface of Mini-Cards such as 3G, CDMA, WLAN, HSPA MODEM , GPS, WiMAX Mini Card to desktop PC.
- ◆ Support SIM card connector.
- ◆ Support U.FL/IPX to RP-SMA pigtail Wifi RF cable adapter.
- ◆ 900/1800 MHz 2dBi Portable Antenna.

4.0 System requirement

- USB port
- Windows 2000, XP, Vista 32/64, WIN7
- Linux

5.0 Installation procedure

- 1) Plug SIM card into SIM card slot.



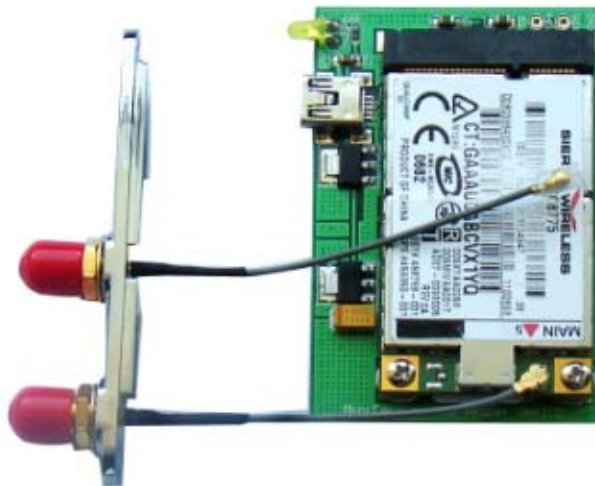
- 2) Plug mini card device into mini PCIE connector with an angle about 30° , and fixed mini card with screw.





- 3) Put the wireless antenna on the RP-SMA CONN.

For this mini card device has only one IPX connector, so have to link with one IPX cable.



- 4) Plug assembled module into Aluminium Case, and fix it.





5). Link the USBMA to computer with USB cable.



For the mini card device has only one antenna IPX connector, so USBMA (above photo) assembled with one antenna. If the mini card device has two IPX connector, assembled with two antennas will be better for signal.

6.0 Caution

All products specifications are subject to change without notice.

Bplus reserves the right to modify the products in its line during the course of the year.